



Your best friend in healthcare

Datasheet AMiS-PRO



AMiS-PRO

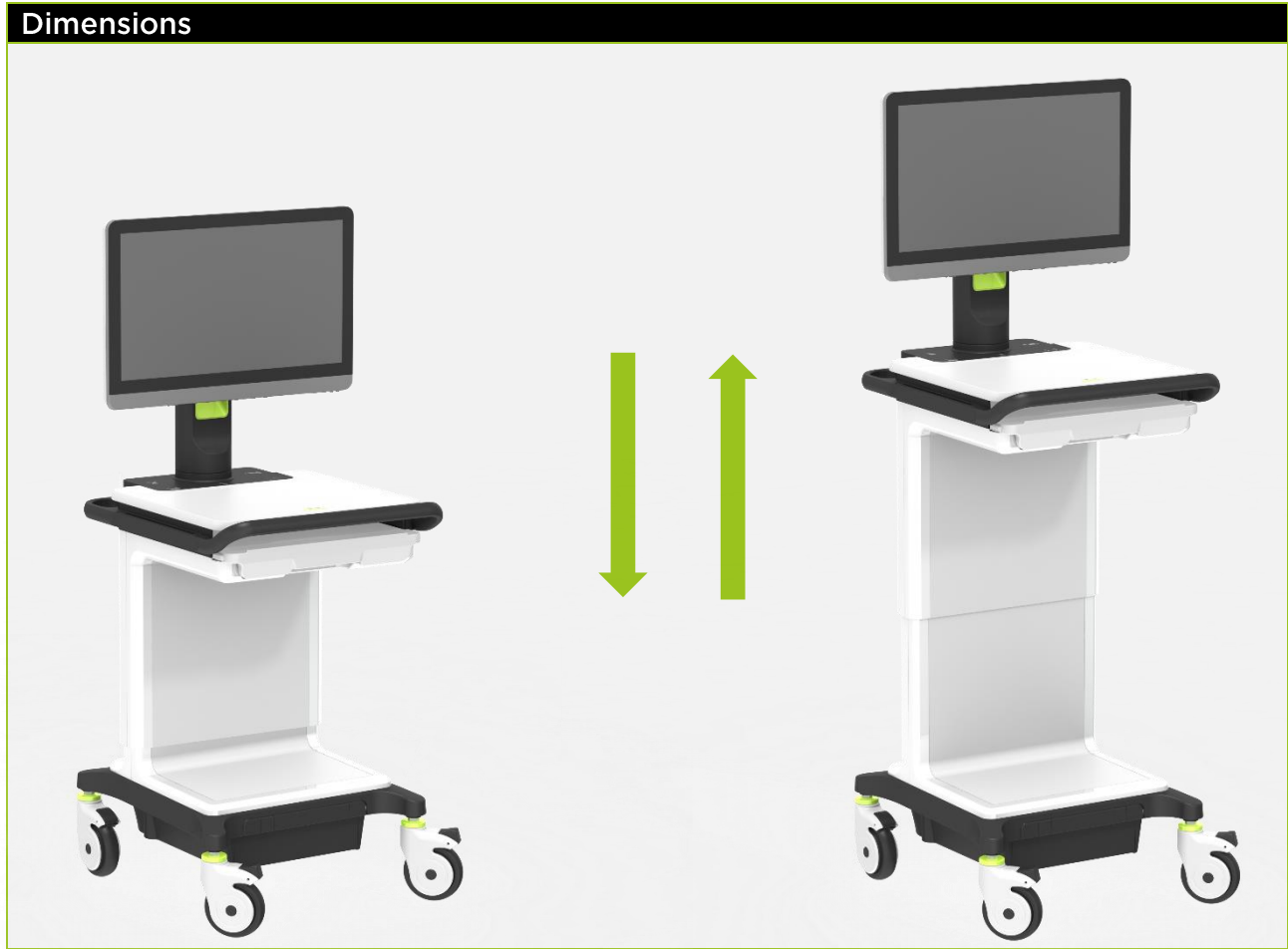
Features

- Ergonomic design for ease of use, cleaning and mobility
- Great flexibility for customization/ configuration/ integration
- Designed for safety/ reliability/ easy maintenance
- Improved driving ability
- Passive and active “touch” workmode
- Efficient Total Cost of Ownership (TCO)
- Medical approved (EN60601-1)
- Wide range of accessories available
- Ready for the future



Specifications		
Footprint		W 520 x D 627 mm
Work surface		W 490 x D 470 mm
		Weight capacity: up to 30 kg / 66 lbs
Workspace height		766 mm - 1116 mm
Keyboard height		836 mm - 1176 mm
Castors		Ø 125 mm anti-static castors (2 with brake)
		Optional: Lockable direction castors
		Optional: Precision Steering Assist Wheel (PSA-Wheel)
Keyboard tray		Keyboard size: up to 380 x 140 x 25 mm
		Extendable to front, equipped with keyboard light
		Optional: Wrist comfort
Mouse pad		Extendable to left and right
DIN-rail		Left and right side 30 x 10 mm / rear 25 x 10 mm
Monitor	Mounting	VESA 75/100
	Rotation	Revolve 180° and tilt 35° (active to passive position)
I/O Port		2x USB, 5V (outside monitor neck)
		4x USB, 5V (inside monitor neck)
		2x USB in front (for keyboard and mouse)
		Optional: 1x LAN RJ45
Dashboard		Power supply button
		LED power button
		LED fuel gauge
		Height adjustment (lower/higher) buttons (if electrical height adjustment)
Certification	Certification	EN60601 - 1, CCC, CE, FCC Class B
	Vibration	EN60601 - 1
Nett weight		47 kg / 104 lbs w/o monitor, computer and battery

Packing information	
Size of box	720 x 640 x 1560 mm
Gross weight (inc. iPS-system)	61 kg / 134 lbs



Power system		
	iPS-M420S-Li Fanless	iPS-M210S-Li Fanless
Battery capacity	420 Wh	210 Wh
Power input	100 - 240 V, 50 - 60 Hz, AC input	100 - 240 V, 50 - 60 Hz, max 4,5 A, AC input
Battery type	Li ion (Lithium-ion)	Li ion (Lithium-ion)
Battery runtime	> 10 hours (depends on System configuration and usage)	> 5 hours (depends on System configuration and usage)
Battery charge time	Approximately 3 hours	Approximately 1,5 hours
Battery lifetime	DOD 80%, 2000 cycles	DOD 80%, 1000 cycles
Dimensions	282 x 258 x 100 mm (11.1" x 10.2" x 3.9")	282 x 258 x 100 mm (11.1" x 10.2" x 3.9")
Certifications	CE, FCC Class B	CE, FCC Class B
Nett weight	8,8 kg / 18 lbs	7,3 kg / 15 lbs

Feature details

1



2



3



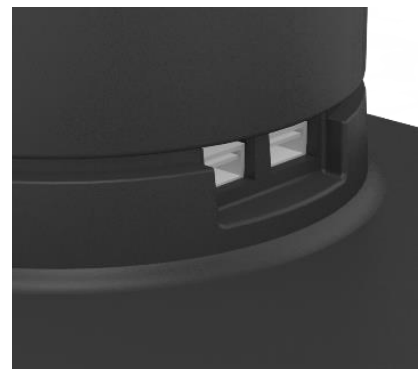
4



5



6



- | | |
|---|---|
| 1 | Overview of the work surface, keyboard and mouse |
| 2 | Tilting and swiveling of the monitor (passive to active mode) |
| 3 | PC tray for using an internal computer |
| 4 | Manual height adjustment with gas spring |
| 5 | Dashboard with buttons for electrical height adjustment |
| 6 | External easy access USB-inputs |